

Forequarter



Shoulder Chops



Neck Chops



Boneless Shoulder Roast
(Rib-Eye removed)



Rib-Eye

Full Loin



Noisettes
(Loin: boned, rolled & sliced)



Rack



Mid-Loin Chops

Striploin



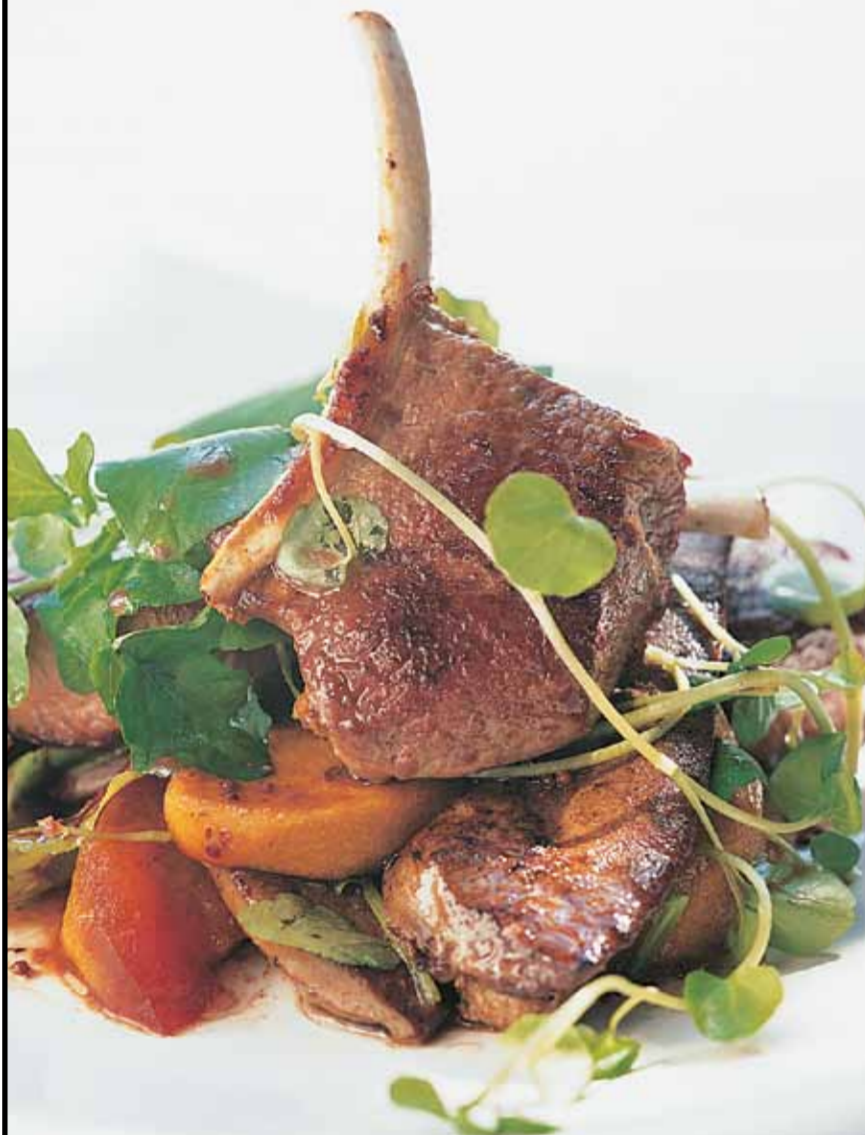
Fillet



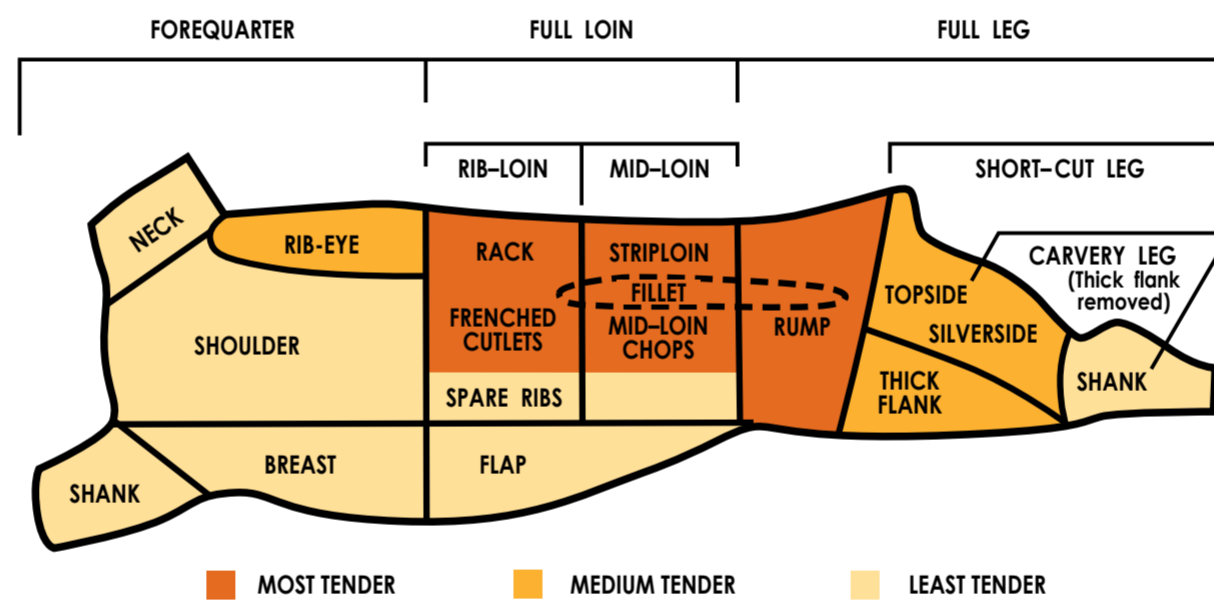
Spare Ribs



Frenched Cutlets



TODAY'S LAMB CUTS



For more information and recipes with beef and lamb, call Beef + Lamb New Zealand on freephone 0800 733 466 or visit www.recipes.co.nz



Full Leg



Leg Chops



Shank



Rump



Topside



SILVERSIDE



Short-Cut Leg



Leg



Thick Flank



Carvery Leg
(Semi-boned leg: topside, silverside and shank)